



DIGITAL BROCHURES

SCAN THE QR CODE TO DOWNLAOD

At Gantrex, we believe in prioritizing sustainability and reducing our ecological footprint in every aspect of our business. That's why we have made the conscious decision to offer digital brochures instead of printed ones. By embracing digital formats, we significantly reduce paper consumption, minimize waste, and contribute to the preservation of our environment. Digital brochures also provide a more convenient and accessible way for our clients to access information about our products and services. We are committed to leveraging sustainable practices and technologies to ensure a greener future for generations to come.

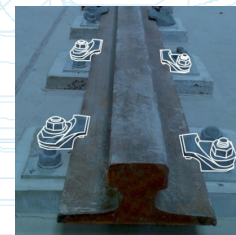
GANTREX™

Gantrex is the global market leader in production, distribution, installation and maintenance of high quality crane rail solutions. Gantrex' products are used in many different applications and end-markets including ports, shipyards, steel mills, aluminium smelters, railway depots and heavy industries.



RAILLOK™ CLIPS

Our patented clips are at the core of our soft-mount crane rail solutions and can fit every rail profile available worldwide. Our clips maintain rails in position via a mechanical lock and accept the rail movements through a soft synthetic elastomer nose, vulcanize-bonded to the clips, designed to accommodate the forces applied to rails by cranes.



PORT CRANE SOLUTIONS

Our dedicated Port Crane Solutions (PCS) portfolio delivers expertise across Crane Diagnostics, Crane Spare Parts and Mechanical and Structural Crane Services. With our PCS products and technical solutions offer we can support all crane types with services that range from innovative diagnostic and analysis tools to structural repairs and replacement of parts.



YOUR WORLDWIDE MARKET LEADER FOR CRANE AND SPECIALTY RAIL TRACKS

WWW.GANTREX.COM

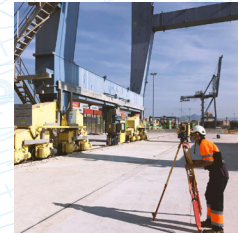
CRANE PARTS

We provide a wide range of spare parts for all your STS and Yard Cranes. As with all Gantrex products, our spare parts come with our technical expertise, quality guarantee, and installation support where needed



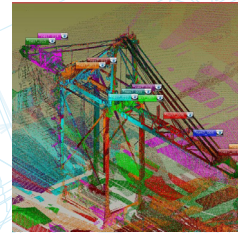
CRANE DIAGNOSTICS

We offer a range of innovative diagnostic services. Using the latest technologies to deliver a health check of your assets, we can ensure your cranes are in top shape.



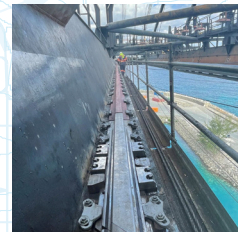
3D SCANNING

3D Scanning is an efficient inspection method to support crane and track commissioning, assess operation structural crane change (ex. loaded / unloaded geometries), help for maintenance or to modify your system or even assess accident impacts.



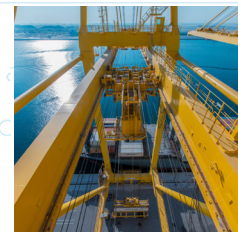
TROLLEY RAIL SERVICES

Our teams are delivering expert advice and installation support for all aspects of your next Short Rail or Trolley Rail replacement project from engineering, scaffolding or platform installation, rail welding and full rail or short rail replacements we will work with you, using only the highest industry standards and best practices.



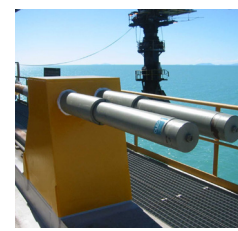
HINGEGUARD™ SHORT RAIL

The Patented Gantrex HingeGuard™ Short Rail is a self-damping short rail solution designed to support the trolley track constraints, namely reduce vibration, shocks and rail wear, and to easily enable the boom opening at the hinge joint of the crane.



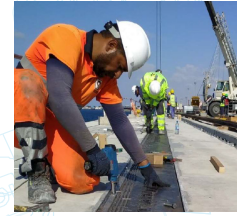
HYDRAULIC BUFFERS

End stops and buffers are commonplace in docks and ports, at the end of rails accommodating cranes and railway lines delivering bulk material or cargo to a port. They are also used with cranes and major machinery to remove some of the high stresses endured by the buildings when cranes reach their destination.



TRENCHLOK™

The GANTREX cable protection system efficiently and economically protects crane power cables from damage and any problems caused by crossing vehicle traffic in ports and steel mills.



RAILLOK™ ADJUSTABLE CHAIR

This patented fastening system is a fast and easy track re-alignment solution to overcome shifting rail foundations without rail removal. GANTREX™ RailLok Adjustable Chairs are available in different sizes and capacities to suit different rail profiles and wheel loads.



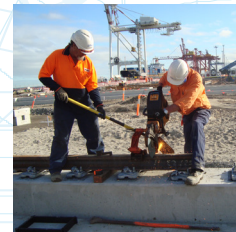
DURAFLOW

Trench-implanted crane tracks can represent a risk for pedestrians and the wheels of some vehicles. The NEW Gantrex™ DuraFlow developed by the in-house Gantrex R&D team is based on resilient material made of specific recycled rubber bonded with polyurethane.



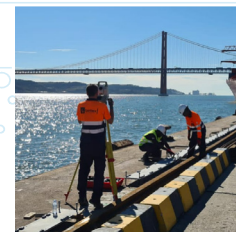
INSTALLATION SERVICE

Rail tracks for cranes and moving machinery require specific installation. Gantrex installation teams around the world cover all aspects of ground track and overhead installations. We also specialize in trolley rails, short rails, and ship-to-shore cranes..



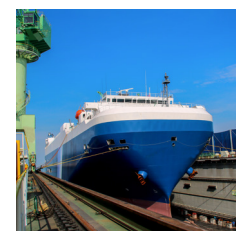
INSPECTION AND SURVEYS

The scope of our offering includes the runway survey as well as the analysis and presentation of the measurement data obtained on site. Using the data collected, we are able to develop individually tailored corrective solutions for you.



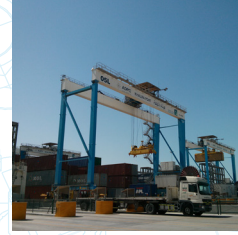
SHIPYARDS

Be it for single or dual level shipyards, or for shiplifts and rail transfer systems, we have many years experience in providing shipyard solutions for clients worldwide. Working alongside Consultants and Operators we come together to bring a level of technical expertise second to none.



GANTRY CRANES

Gantrex designs and delivers crane rail track products for every industrial application, including among other applications portal and intermodal cranes, steel-handling cranes, grab ship unloaders, continuous ship unloaders and goliath cranes.



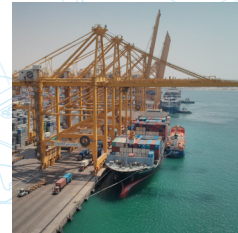
STS CRANES - RUNWAY

RailLok™ clips and pads are the new generation of crane rail fixings engineered by GANTREX to address the problems caused by the new generation of STS cranes.



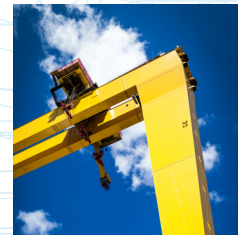
STS CRANE - TROLLEY RAIL

Incorporating the latest innovation of our in-house R&D, RailLok™ clips and pads are adapted to the different load dynamics depending on the type of STS crane trolley.



RMG CRANE - TROLLEY RAIL

Gantrex soft-mount rail support systems, which include rail pad, adjustable rail clips, crane girder tiebacks and hydraulic buffers, along with properly selected rails, will improve the operation of even the most demanding RMG cranes.



All Gantrex brochures are readily available on our website in a variety of languages. Whether you prefer English, Spanish, French, German, or any other language, we strive to accommodate our global audience. Simply visit our website and navigate to the download section to explore our comprehensive range of brochures and technical datasheets. As always, at Gantrex, we value your convenience and aim to provide accessible resources that cater to your specific needs.

